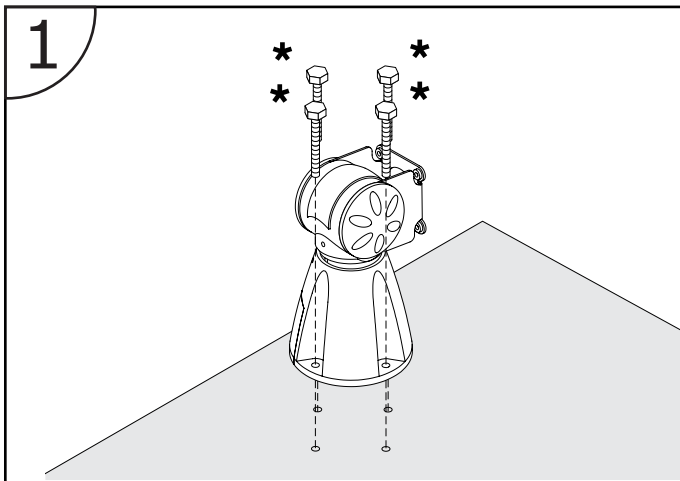
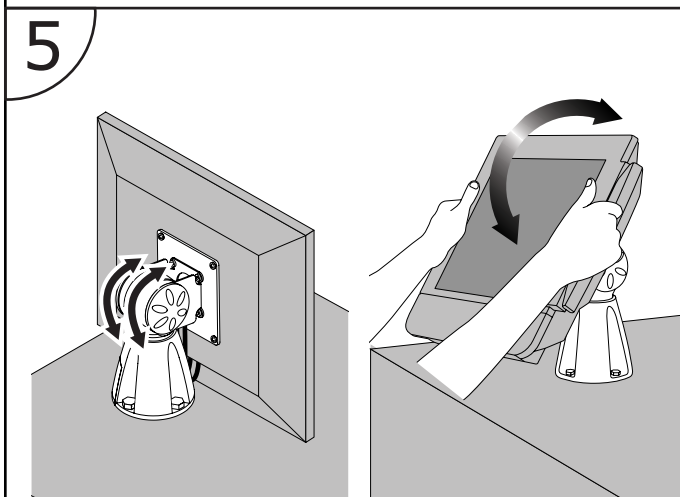
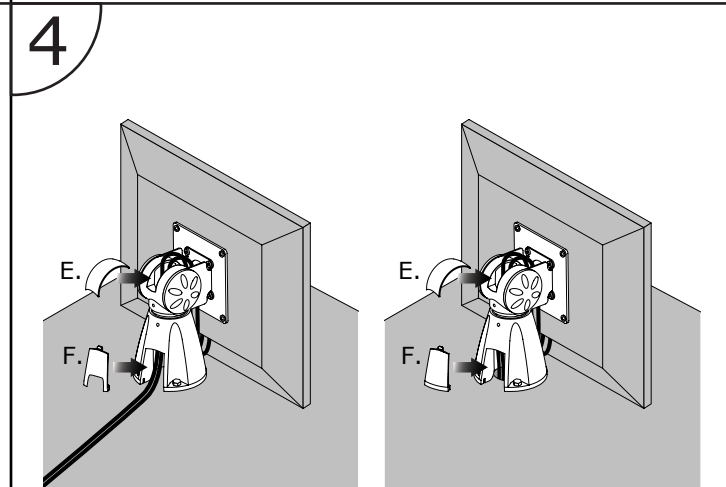
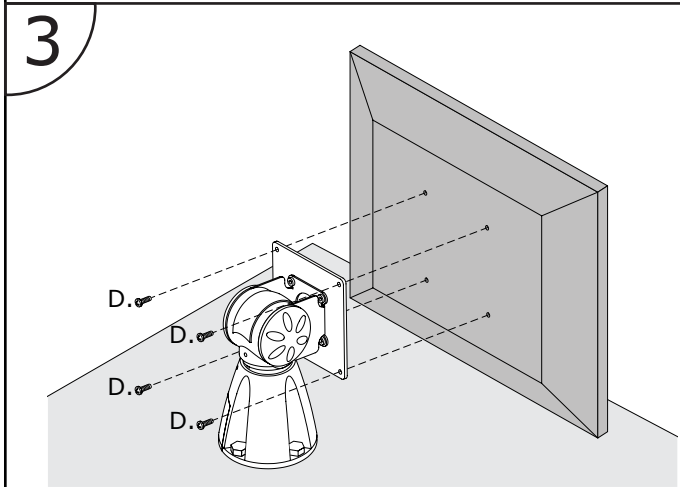
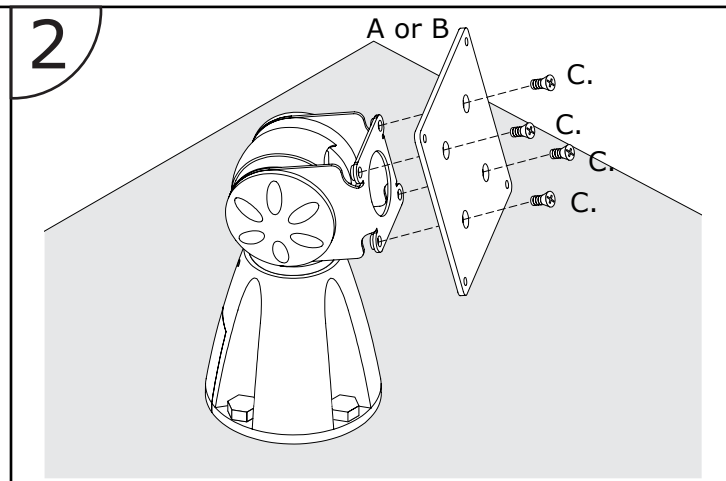


POS1 Installation Instructions

www.ergomart.com | 888 420 3200



*Hardware NOT included.



Please call Ergomart at
888 420 3200
with your questions

www.ergomart.com

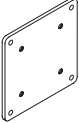
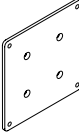
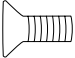
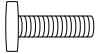



ERGOMART

Ergonomic solutions for office and light industrial work environments

©2015 Ergomart. All rights reserved.

POS1 Parts List

www.ergomart.com | 888 420 3200

| ITEM | DESCRIPTION / PART NO. | QUANTITY |
|--|--|----------|
| A.  | 75mm VESA Adapter Plate 7VESA75 | 1 |
| B.  | 100mm VESA Adapter Plate 7VESA100 | 1 |
| C.  | 10-32 x 3/8" (9.525mm) Philips Flat Head Screw 701164 | 4 |
| D.  | M4-12 Philips Pan Head Screw 702096 | 4 |
| E.  | Tilter Cable Cover 105107-104 | 1 |
| F.  | Base Cable Cover 105134-104 | 1 |
| G.  | 3/32" (2.388mm) Allen Wrench 700146 | 1 |

ERGOMART

Ergonomic solutions for office and light industrial work environments

©2015 Ergomart. All rights reserved.