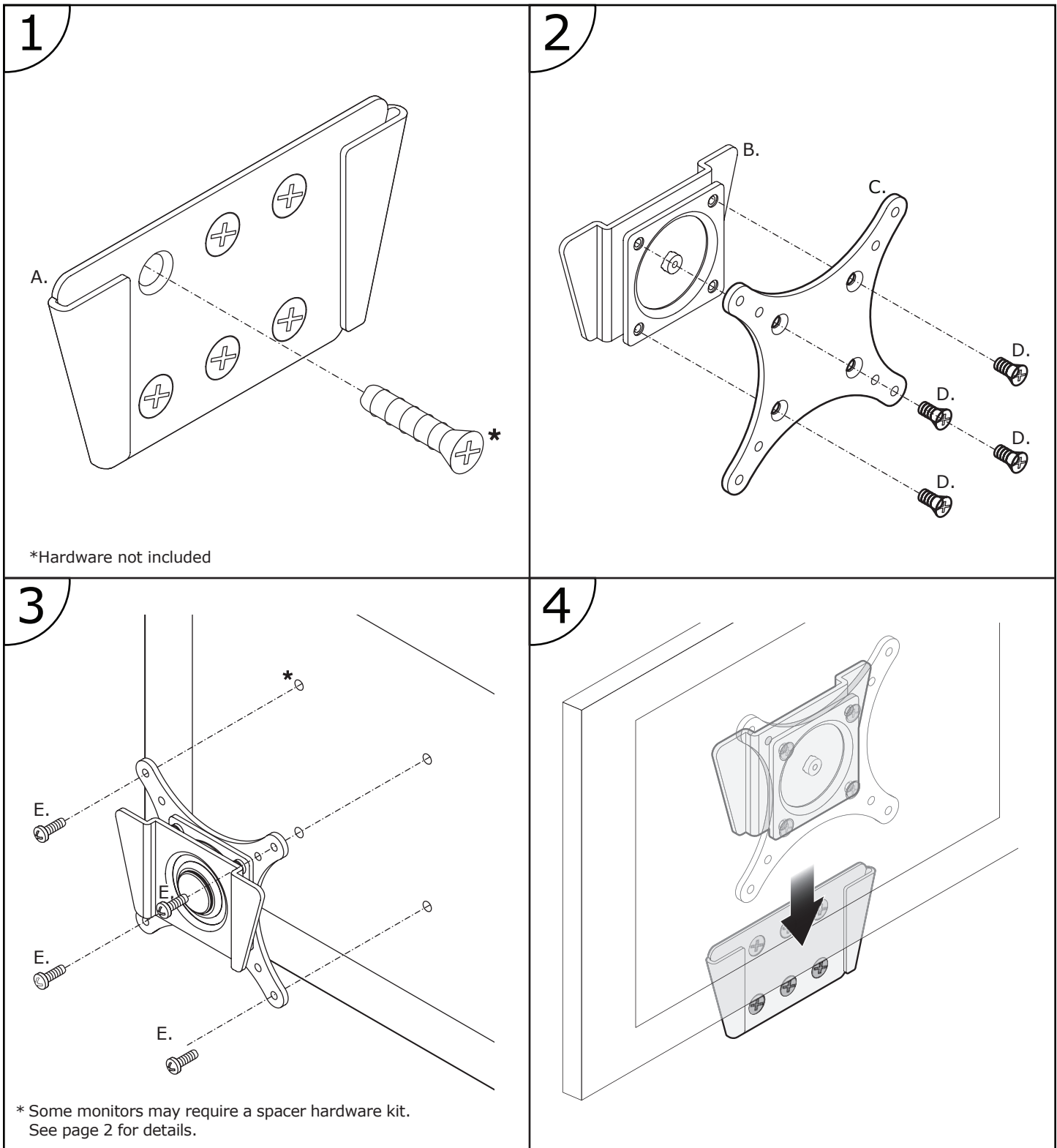
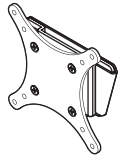


WM9135 Installation Instructions

www.ergomart.com | 888 420 3200



ERGOMART

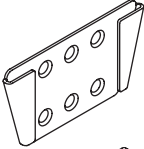
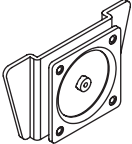



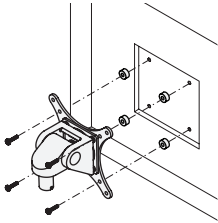
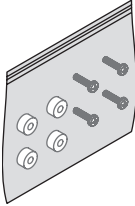
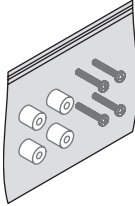
Ergonomic solutions for office and light industrial work environments

©2016 Ergomart. All rights reserved.

WM9135

Parts List

www.ergomart.com | 888 420 3200

ITEM	DESCRIPTION / PART NO.	QUANTITY
A	 <p>Wall Bracket</p>	1
B	 <p>Monitor Plate</p>	1
C	 <p>75/100mm VESA® Adapter Plate</p>	1
D	 <p>10-32 x 3/8" Phillips Flat Head Screw</p>	1 (4-pack)
E	 <p>M4 x 12mm Phillips Pan Head Screw</p>	1 (4-pack)
<p>OPTIONAL SPACER KITS In some cases, the mounting surface on your monitor may be recessed further than permitted by VESA® standards. As a result, a spacer kit may be required.</p> <div>  <div>  <p>.25" Spacer Hardware Kit (4) .25" Spacers (4) M4 x 18mm Phillips Pan Head Screws Order SPKT-1/4</p> </div> <div>  <p>.5" Spacer Hardware Kit (4) .5" Spacers (4) M4 x 25mm Phillips Pan Head Screws Order SPKT-1/2</p> </div> </div>		

ERGOMART

Ergonomic solutions for office and light industrial work environments

©2016 Ergomart. All rights reserved.